



Original Series

Plywood Tops

- Clear faced plywood, sanded smooth, without voids and patches, sealed on both sides with protective stain.
- Rectangular table tops are 3/8" thick; all other table tops are 5/8" thick. (5/8" thick rectangular table tops available upon request. Please call for pricing.)

Mayfoam Tops

- Plywood core, clear faced plywood, sanded smooth, without voids and patches.
- Mayfoam is 1/16" expanded vinyl sheet permanently bonded to the top.

Stock High Pressure Decorative Laminate Tops

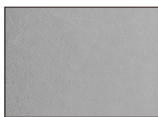
- Plywood core: clear faced plywood sanded smooth, without voids and patches.
- Laminate: HPDL on top as well as a Backer Sheet on underside. All HPDL tops over 60" wide must be seamed.

Standard High Pressure Decorative Laminates

HIGH PRESSURE LAMINATE



4779
Pewter Brush



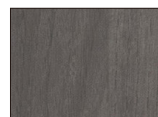
D90
North Sea



7816
Solar Oak



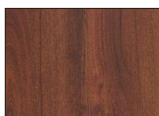
7054
Wild Cherry



7995
Sterling Ash



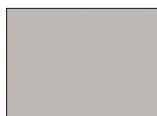
7982
Buka Bark



7039
Windsor Mahogany



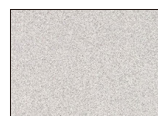
1595
Black



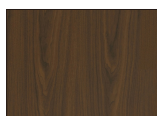
D381
Fashion Grey



1573
Frosty White



4621
White Nebula



7110
Montana Walnut

Other laminates are available as a special quote and may include an up-charge and/or increase in lead-times. Please call Maywood's Customer Service at 1-800-238-6797 with laminate color name, #, and manufacturer (i.e. Formica, Wilson Art, etc.) for a special quote.

Aluminum Flush Edge (AFE)

- Molding is secured to the top with 3/8" diameter steel rivets.
- Available on Rectangular Plywood tops (3/8" thickness only).

Black Vinyl Flush Edge (VFE)

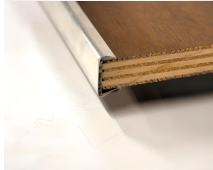
- Available on all 5/8" plywood and HPDL tops.

Channel Aluminum Edge (CAE)

- Molding is high-pressure crimped to the top.
- Available on all 5/8" plywood tops
- Comes standard on all Mayfoam 3/8" and 5/8" tops.



3/8" thick plywood core with Aluminum Flush Edging.



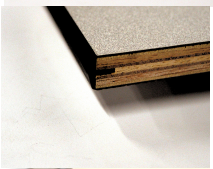
5/8" thick plywood core with Channel Aluminum Edging.



5/8" thick plywood core with Black Vinyl Flush Edging.



5/8" thick plywood core with Laminate top and Channel Aluminum Edging.



5/8" thick plywood core with Laminate top and Black Vinyl Flush Edging.



3/8" and 5/8" thick plywood core with Mayfoam top and Channel Aluminum Edging.

