



## Original Lightweight

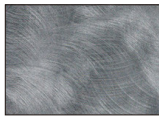
### Stock High Pressure Decorative Laminate Tops

- Plywood core: clear faced 3/8" lite-ply plywood sanded smooth, without voids and patches.
- Laminate: HPDL on top. No Backer Sheet required.

### Standard High Pressure Decorative Laminates



Other laminates are available as a special quote and may include an up-charge and/or increase in lead-times. Please call Maywood's Customer Service at 1-800-238-6797 with laminate color name, #, and manufacturer (i.e. Formica, Wilson Art, etc.) for a special quote.



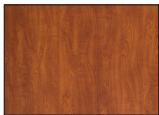
4779  
Pewter Brush



D90  
North Sea



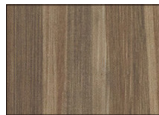
7816  
Solar Oak



7054  
Wild Cherry



7995  
Sterling Ash



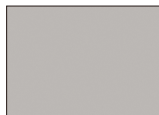
7982  
Buka Bark



7039  
Windsor Mahogany



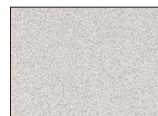
1595  
Black



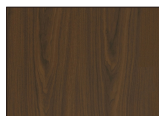
D381  
Fashion Grey



1573  
Frosty White



4621  
White Nebula



7110  
Montana Walnut

## Channel Aluminum Edge (CAE)

- Molding is high-pressure crimped to the top.



5/8" thick plywood core with Laminate top and Channel Aluminum Edging.

