



Portable Bars

Structure

- Available in 4' and 6' lengths.
- Overall height = 42".
- 16" deep top. Easily lifts out of side brackets to disassemble bar.
- 18" deep workspace shelf. Folds down, allowing sides to fold in for easy storage.
- Cut out handles on sides for easy transportation.

Plywood Core

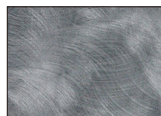
- Clear faced plywood; 5/8" thick, sanded smooth, without voids and patches.

Stock High Pressure Decorative Laminate

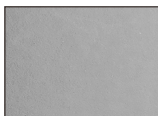
- Laminate HPDL on all sides.
- Frosty White #1573 is spec.
- Standard High Pressure Decorative Laminates available at additional cost.

Standard High Pressure Decorative Laminates

HIGH PRESSURE LAMINATE



4779
Pewter Brush



D90
North Sea



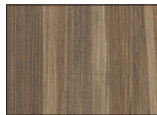
7816
Solar Oak



7054
Wild Cherry



7995
Sterling Ash



7982
Buka Bark



7039
Windsor Mahogany



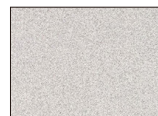
1595
Black



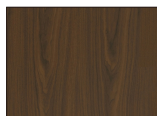
D381
Fashion Grey



1573
Frosty White



4621
White Nebula



7110
Montana Walnut

Other laminates are available as a special quote and may include an up-charge and/or increase in lead-times. Please call Maywood's Customer Service at 1-800-238-6797 with laminate color name, #, and manufacturer (i.e. Formica, Wilson Art, etc.) for a special quote.

Channel Aluminum Edge (CAE)

- Molding is high-pressure crimped to all edges.



5/8" thick plywood core with Laminate top and Channel Aluminum Edging.

